

April 10 2023

Addendum No. 3

VPL Architects
426 East Main Street
Lancaster, Ohio 43130
(740) 654-4048/ Fax 740-654-3009

xpert
engineering

1857 Northwest Blvd., Columbus, Ohio 43212
614.764.5000 www.xpert-eng.com

Attention: Nicholas J. Palladino
740-654-4048 cell
vp1.npalladino@gmail.com

Subject: **Office Facility Alterations and a New Maintenance Building for the:
Fairfield County Board of Developmental Disabilities
795 College Ave
Lancaster, Ohio 43130**

Dear Nick:

I am summarizing the questions and the response of our office. *The electrical contractor is encouraged to visit the site to familiarize themselves with the existing conditions.*

1. Please specify the type of the existing fire alarm system and the model number for the smoke detectors.
The existing system contains a Notified SFP-400B Fire Alarm Control Panel with a dialer that is monitored by ADT with some tyco/simplex stickers from 2010 –or-2016 Additional tags are from Capitol Fire Protection (614-279-9448).
2. Plans show MSB for the main, but the electrical floor plan shows MDP. Are these the same?
The existing building has a single service entrance switchboard labeled both as MSB and MDP.
3. Which brand of gear (MSB or MDP) will be feeding the new Panel R?
The existing building has a General Electric fusible switchboard (MSB/MDP).
4. Electrical drawing E101D is conflicting with the architectural showing the demolition of the cameras. Electrical drawing notes say the cameras are to remain. Please confirm.
The best illustration is on A401, coded notes 23 & 24 also coded note 22 as it refers to the exterior illumination. Also see A301, Typical wall section #1, coded note 34 & 35. See also A101.1, coded note 22, A101 coded note 17 & A100.3, coded note 21 as well as A100.2 coded note 15 & A100.1 coded note 14.

All contactors to note the modifications to the roof elements impact the exterior building devices – most devices need to be relocated as illustrated on A401. So the overall device

location remains, just at a lower elevation so the contractor shall remove the device, rework the conductors as shown on A401 and reinstall the device.

A100, Coded Note 23 states "...refer to demolition plan of the electrical", sheet E101D shows coded note #5 "Existing camera to remain" for camera at the main entry, (Note the cameras will be relabeled with coded note #6 for clarity) . Please see revised E101D and E101N attached for further clarification.

5. The electrical legend does not say which devices PP and K are near the receptionist demo area. Those two devices are drawn to be demolished.

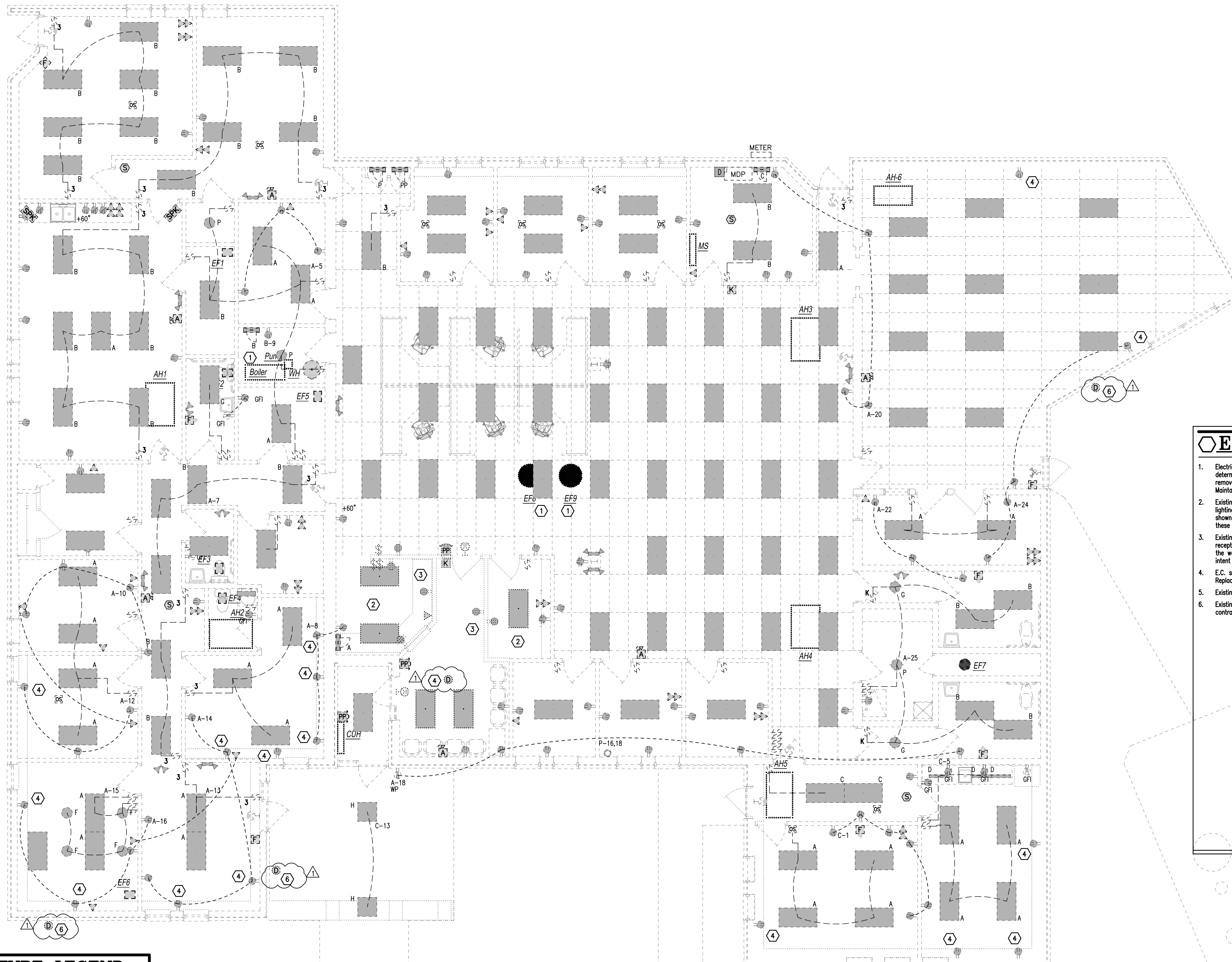
PP is a accessible/ada push paddle for the door operator. K is a swipe for security access. Please see revised E101D and E101N attached for further clarification.

If there are any questions and/or any additional information requested, please do not hesitate in contacting me at 614-309-6931.

Sincerely,



Lance J. DeBenedictis, P.E., Principal
xpert engineering llc



Electrical Coded Notes

1. Electrical contractor shall coordinate with the GC and the work of all other trades to determine the time equipment scheduled for demolition can be removed, the EC shall removed the power feed for scheduled equipment to be demolished back to the origin. Maintain heat to building from boiler until new roof top units are operational.
2. Existing lighting in this area to be demolished, electrical contractor shall evaluate the lighting branch circuit for suitability in re-use for new lighting and only reuse if the work shown on the scope documents is fully compliant with the AHJ, NEC and the intent of these documents.
3. Existing receptacles in this area to be demolished, electrical contractor shall evaluate the receptacle branch circuit for suitability in re-use for new receptacles and only reuse if the work shown on the scope documents is fully compliant with the AHJ, NEC and the intent of these documents.
4. E.C. shall rework receptacles for furred out walls. Coordinate exact requirements in field. Replace with new receptacle.
5. Existing security camera to be remain.
6. Existing security camera to be removed and relocated. Coordinate with owner and security contractor.

LINETYPE LEGEND	
	NEW WORK
	EXISTING TO REMAIN
	DEMOLITION WORK
	ABANDON IN PLACE

First Floor
 3/16"=1'-0"

xpert
engineering

300 Marconi Blvd., #203 Columbus, Ohio 43215
 614.764.5000 www.xpert-eng.com

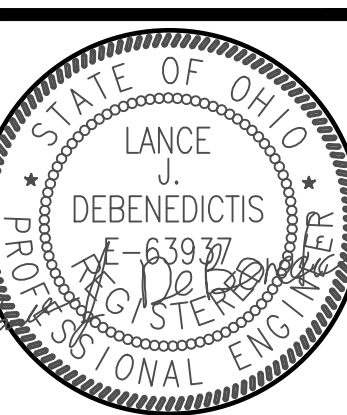
Office Facility Alterations and a New Maintenance Building for the:
FAIRFIELD COUNTY BOARD OF DEVELOPMENTAL DISABILITIES
 795 College Avenue
 Lancaster, Ohio 43130

VPL
 ARCHITECTS
 426 EAST MAIN STREET
 LANCASTER, OHIO 43130
 phone: (740) 654-4048
 facsimile: (740) 654-3009

COMMISSION No.
P2118

ISSUE	MARK	DATE
Bidding		02/15/2023
Bid RFI	1	4/10/2023

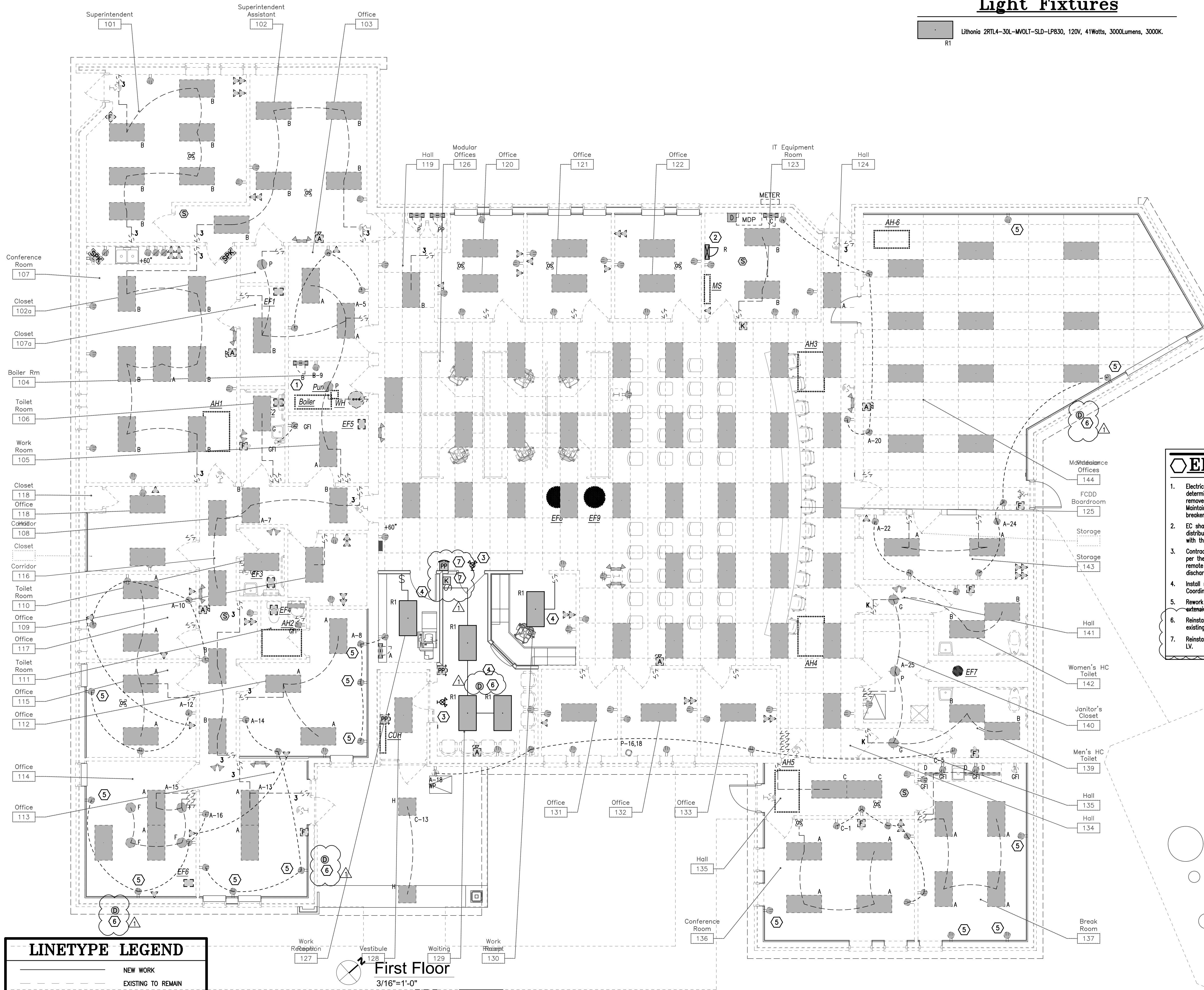
DRAWN BY:



ELECTRICAL
FIRST FLOOR
DEMO WORK
PLAN
 DRAWING NUMBER
E101D

Light Fixtures

R1 Lithonia 2RTL4-30L-MVOLT-SLD-LP830, 120V, 41Watts, 3000Lumens, 3000K.



- ### Electrical Coded Notes
1. Electrical contractor shall coordinate with the GC and the work of all other trades to determine the time equipment scheduled for demolition can be removed, the EC shall removed the power feed for scheduled equipment to be demolished back to the origin. Maintain heat to building from boiler until new roof top units are operational. Mark breakers as spare from demolished pump and boiler when removed.
 2. EC shall coordinate with the GC and the work of all other trades and install new electrical distribution panel in this area, panel shall have required service clearance in accordance with the NEC, the AHJ and the manufacturers recommendation.
 3. Contractor to provide self contained battery backup combination exit and egress lighting per the AHJ and the IBC, NEC. Battery shall be sized for remote emergency heads, and remote emergency heads shall be installed on the building exterior to illuminate the exit discharge to the public way.
 4. Install new LED lighting in renovated area. Coordinate exact requirements in field. Provide extension boxes as required.
 5. Rework receptacle for furred out wall. Coordinate exact requirements in field. Provide extension boxes as required.
 6. Reinstall existing cameras that were removed for new work on the roof. Connect to existing systems.
 7. Reinstall door security devices from demolished wall/door assembly. Connect to existing LV.

LINETYPE LEGEND

	NEW WORK
	EXISTING TO REMAIN
	DEMOLITION WORK
	ABANDON IN PLACE

First Floor
3/16"=1'-0"

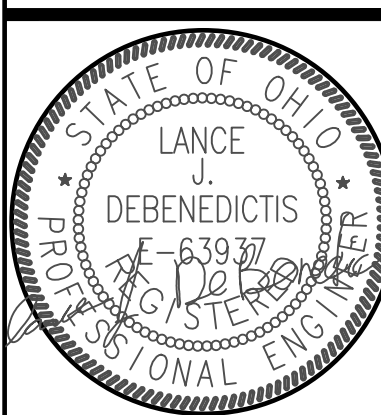
Office Facility Alterations and a New Maintenance Building for the:
FAIRFIELD COUNTY BOARD OF DEVELOPMENTAL DISABILITIES
795 College Avenue
Lancaster, Ohio 43130

VPL
ARCHITECTS
426 EAST MAIN STREET
LANCASTER, OHIO 43130
phone: (740) 654-4048
facsimile: (740) 654-3009

COMMISSION No.
P2118

ISSUE	MARK	DATE
Bldg		02/15/2023
Bld RFI	1	4/10/2023

DRAWN BY:



xpert
engineering

300 Marconi Blvd., #203 Columbus, Ohio 43215
614.764.5000 www.xpert-eng.com

ELECTRICAL
FIRST FLOOR
NEW WORK PLAN
DRAWING NUMBER
E101N